



Notice of Planned Construction Summer 2018

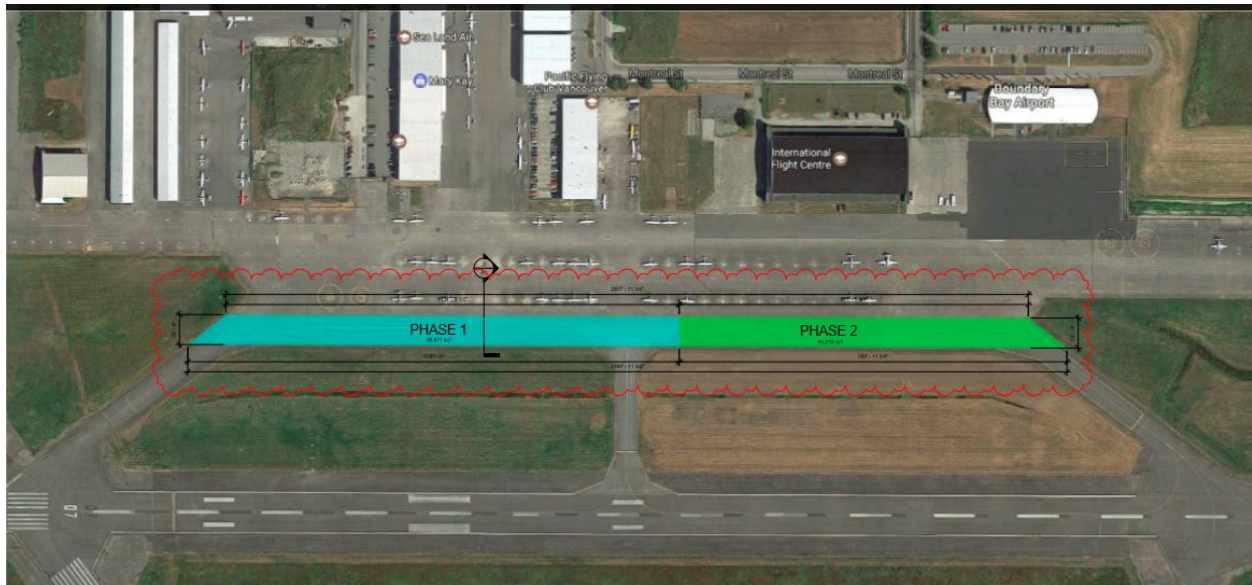
1.1 APRON 1 REPAIR

Alpha Aviation Inc. is planning to rehabilitate the southern portion of Apron 1 following the airshow this summer. The work is scheduled to commence immediately following the airshow and is expected to take 6 weeks. The work has been phased to ensure minimum impact to airside operations.

1.2 SCOPE OF WORK

The project involves the following work:

- Removal of the existing blacktop surface
- Compaction testing of movement area between taxiway A and B
- Place a new 6" layer of blacktop in two phases
- Replacement of existing guide lines
- Crack sealing as required



1.3 PLANNED CONSTRUCTION SCHEDULE

This construction schedule is anticipated to take six weeks and is scheduled to start July 23rd immediately following the Boundary Bay Airport Airshow. During Phase 1 of the project Taxiway Alpha and Bravo will be closed and Taxiway Charlie and Golf will remain open. During



Phase 2 of the project Taxiway Alpha, Bravo and Golf will be open and Charlie will be closed.

The work has been divided into two phases to allow the continued access to Runways 07-25 and 13-31. The areas under construction will be fenced off and a NOTAM advisory will be issued. In addition project updates will provided on the airport web site

We recognize this will have some impact on operations and every effort will be made to expedite the work as quickly as possible to minimize operational impact.

1.4 AIRSIDE SAFETY AND ESCORTING REQUIREMENTS

The construction contractor will be provided airside escorting services by Alpha Aviation during the construction stages of this project. The Contractor will work closely with Alpha Aviation to maintain airside security at the access point used by construction equipment/personnel. The contractor will submit a safety plan to Alpha Aviation Inc. prior to commencing work.

1.5 SAFETY BARRICADES AND HAZARD LIGHTING

Safety barricades will be placed on apron 1 during the civil work required for removing asphalt and replacing the sub-base as well as re-paving of the surface. The active work areas will be fenced off using medium height fencing and appropriate marking. Alpha Aviation works directly with the fence rental company to ensure appropriate access and operational control during periods of construction.

Construction Zone Fencing



1.6 F.O.D. CONTROL PROGRAM

During periods when trucks or equipment are entering the construction area the immediate apron area will be temporarily closed to traffic and only opened following full inspection and clearance from airport operations personnel.

F.O.D. will be monitored by the Airport Escorts, and the Contractor's Site Representative. Details of the contractor's F.O.D. control program shall be reviewed with the Airport Manager prior to the commencement of work.