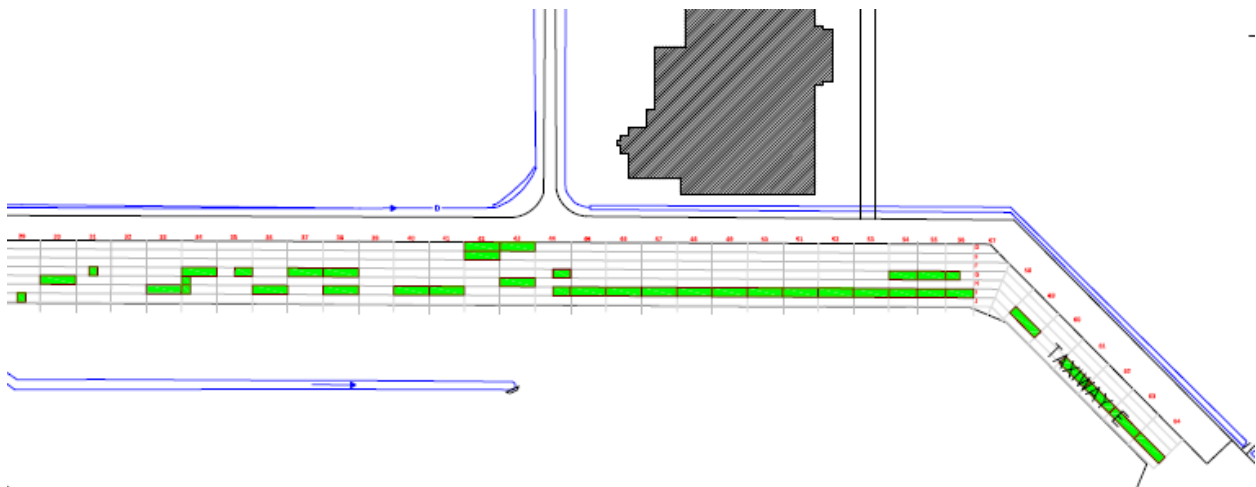


CZBB Airside Capital Project Update

June 28th, 2016

1. Apron 2 Repairs

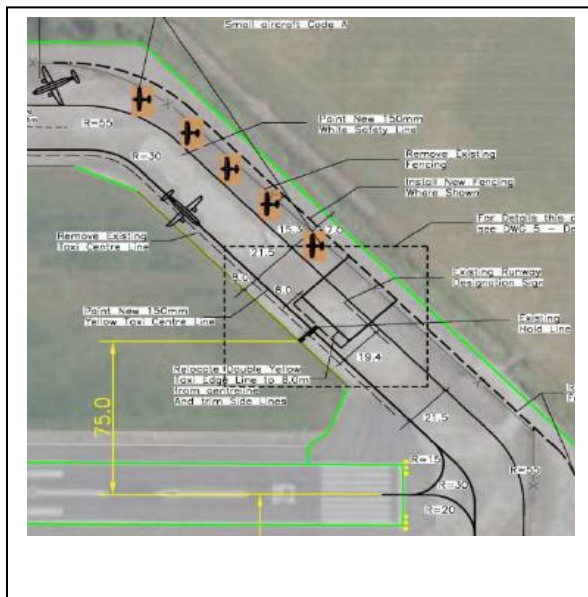
- Construction is scheduled to commence on Phase 1 of Apron 2 repairs this week.
- Sections of the apron will be fenced off in a phased program to allow replacement of panels while maintaining access for light aircraft.
- Access to the card lock area and taxiway Echo including Apron 3 will be maintained.
- Prior to the airshow on July 23rd work will be temporarily shut down and the apron returned to full operation prior to and during the show.
- Access for the construction crews will be near the current card lock location and FOD will be managed on a daily basis.
- Please advise airport operations of any concerns or issues.



2. Taxiway Echo

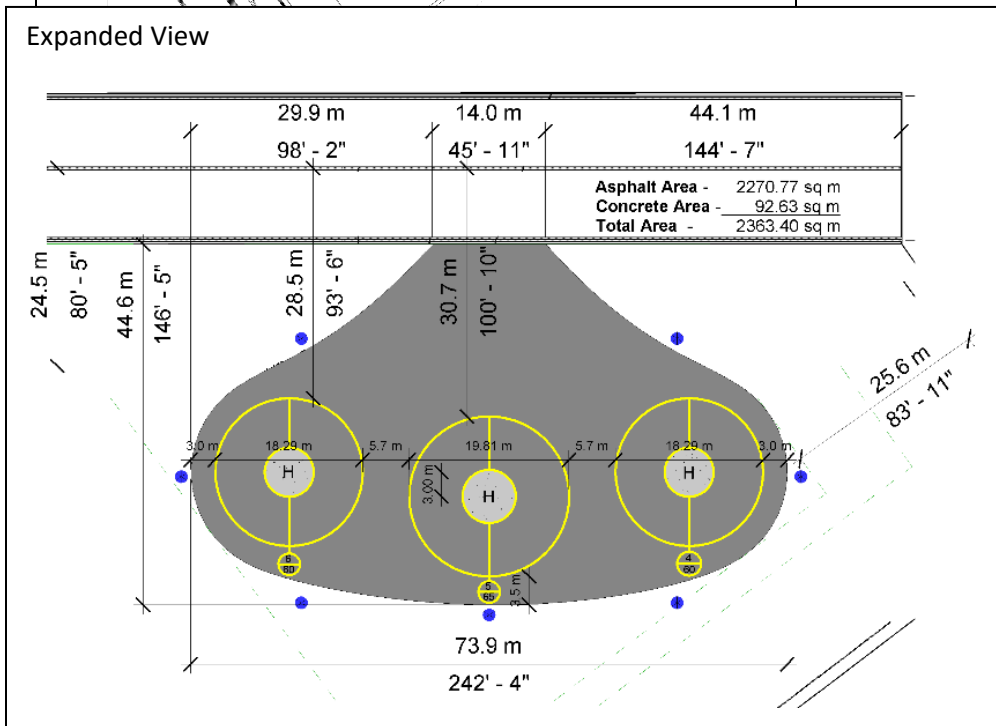
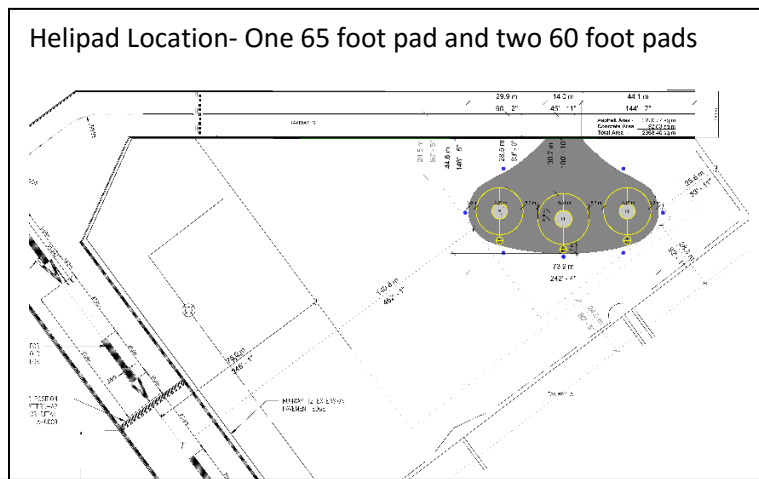
- Painting is now complete to update taxiway Echo to a Code B standard (maximum 78 ft. wingspan). The 50 ft. wingspan restriction is now removed.
- Run-ups can be completed to the east of the white safety line located on the apron area.
- Taxiway Echo is a stub taxiway which begins at the stop bars and the entrance sign to Runway 25.
- The safety fence has been replaced and relocated east to permit a wider area for run-ups.

Layout of modifications and relocated fence



3. New Helicopter Pads

- Site preparation work is progressing on three new helipads to be constructed in the grass area between taxiway Alpha and the apron leading the taxiway Golf.
- Airside escorts are used to control any truck traffic during construction and any FOD will be cleaned up immediately.
- The new helipads will permit helicopter operations to be better separated from light aircraft and will also allow a larger area for run-ups by light aircraft.
- Once the new helipads are in full operation the existing Pads located on the west part of Apron 1 will be decommissioned.



4. Apron 3 Repairs

- Patch Repairs have been taking place on Apron 3 over the past several weeks.
- Road access to Apron 3 will be repaired at a later date after the installation of a water main in the infield. This repair has been delayed to ensure any damage caused by heavy truck traffic is dealt with adequately.

Apron 3

